

## Welcome!

**August 14 Consortium Meeting**

## R5DC Resilient Region Plan

Is a  
Community Driven  
University Assisted  
Partnership

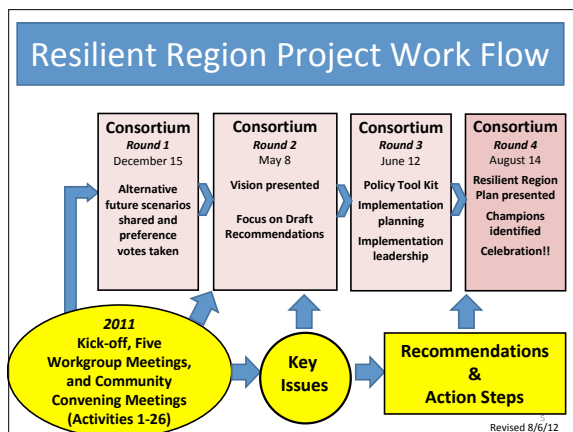
Pursuing E<sup>2</sup>  
Economic and Environmental Vitality

## Mission

To create a community-driven, university-assisted partnership around planning sustainable regions that will integrate the disciplines of Housing, Transportation, Natural Environment (Land Use) and Economic Development with viable strategies through HIGHLY involved civic engagement....

## What we will do today

- Review how we got here
- Present the finished plan
- Hear from our special guests
- Next steps/Champions
- Celebrate our success



## Civil Discussions were Key!

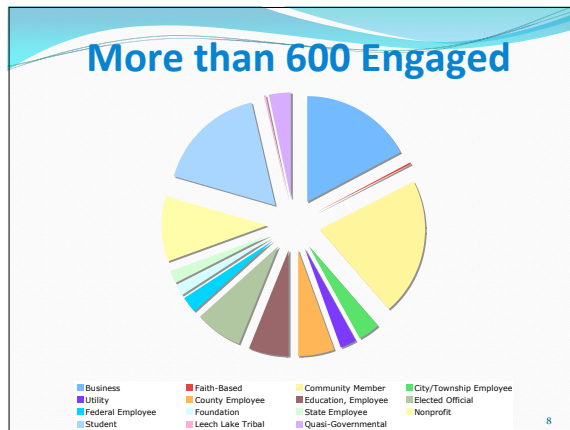
- **Speak your Peace**, Duluth Superior Community Foundation.
- **The Nominal Process**, the Initiative Foundation.
- **Focused Listening, Inclusiveness, Mutual Respect and Sharing Perspectives.**

## The Plan, Eleven Themes

1. Affordable Housing	7. Health Care
2. Housing	8. Natural Resources & Development Patterns
3. Changing Populations	9. Tighter Resources
4. Connectivity	10. Transportation
5. Education & Workforce	11. Economic Engines
6. Energy	

**Recommendations and Action Steps spelled out for each theme**

7



## \$4 Million Dollars Leveraged for Implementation!

9

## Some Samples of Success!

10

## Housing

- Brainerd Area “Scattered Site Replacement Program”
  - Brainerd HRA, Crow Wing County HRA, Greater Lakes Association of Realtors, Greater MN Housing Fund and Initiative Foundation
- Fair Housing Equity Assessment (FHEA)
- Housing Tool designed by Zach Tagar, UM.

11

## Affordable Housing Location/ Allocation Model

- Informs the regional Fair Housing Equity Assessment.
- The model seeks to answer the question: **“how many affordable housing units should be created where?”**

**2012 Affordable Housing: Number of Units Needed Per City, at 80% Area Median Income, with Jobs Ranking = Need Ranking**

Regional Information  
Map of Minnesota  
Source: HUD, SEED, MNCLT, RSDP Analysis  
Analysis and Map production: Z. Tagar, April 04, 2012

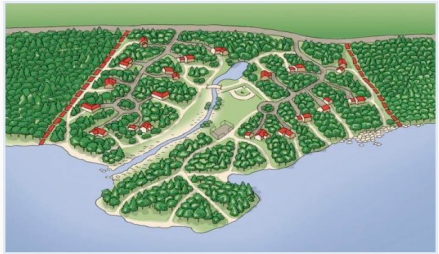
12

## Active Transportation Grant

- Walking and Biking Identified as 1 of 4 Key Issues in Transportation
- Partnerships
- Low Health Ranking
  - Cass 84<sup>th</sup>
  - Crow Wing 62<sup>nd</sup>
  - Monticello 98<sup>th</sup>
  - Todd 67<sup>th</sup>
  - Wadena 80<sup>th</sup>
- Supporting Safe, Healthy Transportation & Active Living




“Land use isn’t rocket science; it’s harder.”



14

## Micro Lending

- Launched Program 5 Months ago
- Already over **\$36,250** in Private Equity
- 37 new Jobs created!**



15

## Fire District Program

*Blandin Lightspeed Grant*

- Teleconferencing Equipment Installed at 11 Fire Departments.
- Training Streamed live to other depts.
- Reduced:
  - VMTs,
  - Travel Time
  - \$ Savings over time
  - And Improved connectivity and communication



Blandin Foundation™  
STRENGTHENING RURAL MINNESOTA

16

## Policy Implementation Toolkit

- Sustainable development best practices
- Model comprehensive plan language
- Model zoning ordinance language




17

## Special Speakers and Panel Discussion

18

## In Appreciation....

19

## Implementation

- Two Champions for each theme area.
- Resource people and organizations for each theme.
- Champions collaborate and connect the dots within their theme area and with other theme champions.
- First Champion Collaboration early this fall.
- Not too late, sign up to be a resource in one or more theme areas of interest during refreshment time.

20

## Welcome the Theater for Public Policy!

21

## Before you go.....

- Complete your evaluation
- Enjoy refreshments and mixing with others
- Add your name to one or more themes to Stay involved and connected!

22

## Thank You!



Serving Crow Wing, Cass,  
Morrison, Todd and Wadena  
Counties

23